



FIELD QUICK LOOK REPORT PLT-FLOWING

Client : VESTIGO
Field : LARUT-A
Well Name : A07L
Survey Date : 19/12/2022

Service Company : DIMENSION BID (MALAYSIA) SDN.BHD



FIELD LOG QUALITY CHECK - MPLT

Tubing Size	: 2-7/8" 6.4 lb/ft N80 Vam Ace	Max Temperature	: 250 Deg F
Casing Size	: 9-5/8" 40 N-80 Butress	Max Pressure	: 1475 psi
Survey Objective	: To Check flow zones contribution	Survey Condition	: Flowing 100% Choke Size

Log Presentation

1. Standard presentation
2. Correct curve scale
3. Log Annotation
4. Curve labelling
5. Surface test data
6. Well Test Result

Comments

Flowing 100% Choke Size - Gas lift valve jammed open due to transducer sent out for repair, faulty error reading at DCS for gas lift flowrate

Tool Data Quality

Good: tick /; X: Fail; N/A: No Data

No	Sensor	Serial No	Reliability	Repeatability	Noise	Anomaly	Tool Failure	Comment
1	QPS	10021570	/	/	/	/	/	
2	PRT	217141	/	/	/	/	/	
3	PGR	217116	/	/	/	/	/	
4	CCL	10012220	/	/	/	/	/	
5	ILS	10022013	/	/	/	/	/	
6	CWH	10010264	/	/	/	/	/	
7	FDR	10010243	/	/	/	/	/	
8	CFBE	211582	/	/	/	/	/	
9	CFSM	10022712	/	/	/	/	/	
10								

Operational Highlights

1. Depth matching
2. Logging speed
3. Any obstruction
4. Any debris on tool
5. PR No related

Comment

Reference to OHGR provided

30,60,90 ft/min

No obstruction observed

Additional Remarks

Put picture for evidence in the event of tool failure.

Prepared by:

Name: Ikram Muslim
Position: Junior Field Engineer
Date: 19/12/2022

PLT SEQUENCE OF EVENTS

Client	: VESTIGO	FTHP (psig)	: 300
Field	: LARUT	RKB Elevation	: 14.8 m
Well No.	: LARUT-A07L	Deviation (deg)	: 54.47 Deg @ 1387m
Tubing	: 2 7/8" 6.4 ppf N80 Vam Ace		
Well Type	: Oil Producer		
Survey Date	: 19-Dec-22		
Survey Objective	: To Check flow zones contribution		
Survey Duration	: 9 Hours		

Time (hrs)	Event Description	Remarks
9:30:00	Programmed UMT Memory section.	
11:43:00	Hooked up battery to tool.	
11:50:00	Hooked up MPLT to wireline tool string.	
12:15:00	Open well.	
12:25:00	RIH with line speed of 30 m/min to set depth at 2911 m-MDTHF . * Gas lift valve jam open and no gas lift flowrate reading	
14:16:30	MPLT at set depth 2911 m-MDTHF . Wait 5 minutes.	
14:26:00	Log up 10 m/min from 2911 - 2565 m-MDTHF .	PASS 1
15:03:30	Stop at 2565 m-MDTHF for 5 minutes.	
15:09:00	Log down 10 m/min from 2565 - 2911 m-MDTHF .	PASS 2
15:48:40	Stop at 2911 m-MDTHF for 5 minutes.	
15:54:00	Log up 20 m/min from 2911 - 2565 m-MDTHF .	PASS 3
16:13:21	Stop at 2565 m-MDTHF for 5 minutes.	
16:19:00	Log down 20 m/min from 2565 - 2911 m-MDTHF .	PASS 4
16:38:00	Stop at 2911 m-MDTHF for 5 minutes.	
16:43:00	Log up 30 m/min from 2911 - 2565 m-MDTHF .	PASS 5
16:56:30	Stop at 2565 m-MDTHF for 5 minutes.	
17:01:00	Log down 30 m/min from 2565 - 2911 m-MDTHF .	PASS 6
17:14:00	Stop at 2911 m-MDTHF for 10 minutes.	
17:24:00	Stop at 2905 m-MDTHF for 10 minutes.	SS1
17:30:00	Stop at 2869 m-MDTHF for 5 minutes.	SS2
17:37:00	Stop at 2809 m-MDTHF for 5 minutes.	SS3
17:51:00	Stop at 2615 m-MDTHF for 5 minutes.	SS4
18:04:00	Stop at 2444 m-MDTHF for 5 minutes.	SS5
18:09:00	Stop at 2423 m-MDTHF for 5 minutes.	SS6
18:28:00	Stop at 2041 m-MDTHF for 5 minutes.	SS7
18:33:00	Stop at 2021 m-MDTHF for 5 minutes.	SS8

18:52:00	Stop at 1608 m-MDTHF for 5 minutes.	SS9
18:56:00	Stop at 1588 m-MDTHF for 5 minutes.	SS10
19:25:00	Stop at 876 m-MDTHF for 5 minutes.	SS11
19:29:00	Stop at 856 m-MDTHF for 5 minutes.	SS12
19:46:00	Stop at 485 m-MDTHF for 5 minutes.	SS13
20:01:00	Stop at 185 m-MDTHF for 5 minutes.	SS14
20:08:00	Stop at 85 m-MDTHF for 5 minutes.	SS15
20:15:00	Stop at 0 m-MDTHF for 5 minutes.	SS16
20:23:00	POOH MPLT into Lubricator wait 3 minutes.	SS17
20:28:00	Close well. Depressurize Lubricator and disconnect toolstring.	
20:43:00	Disconnect MBH memory from UMT.	
21:00:00	Download UMT Memory and Depth Recorder (DTR).	
21:30:00	Verify the data and performed QA/QC analysis.	

Note:

I, the undersigned, justified that the above services and equipment have been provided.

Junior Field Engineer

Client Representative

Name: Ikram Muslim

Date: 19/12/2022

Name:

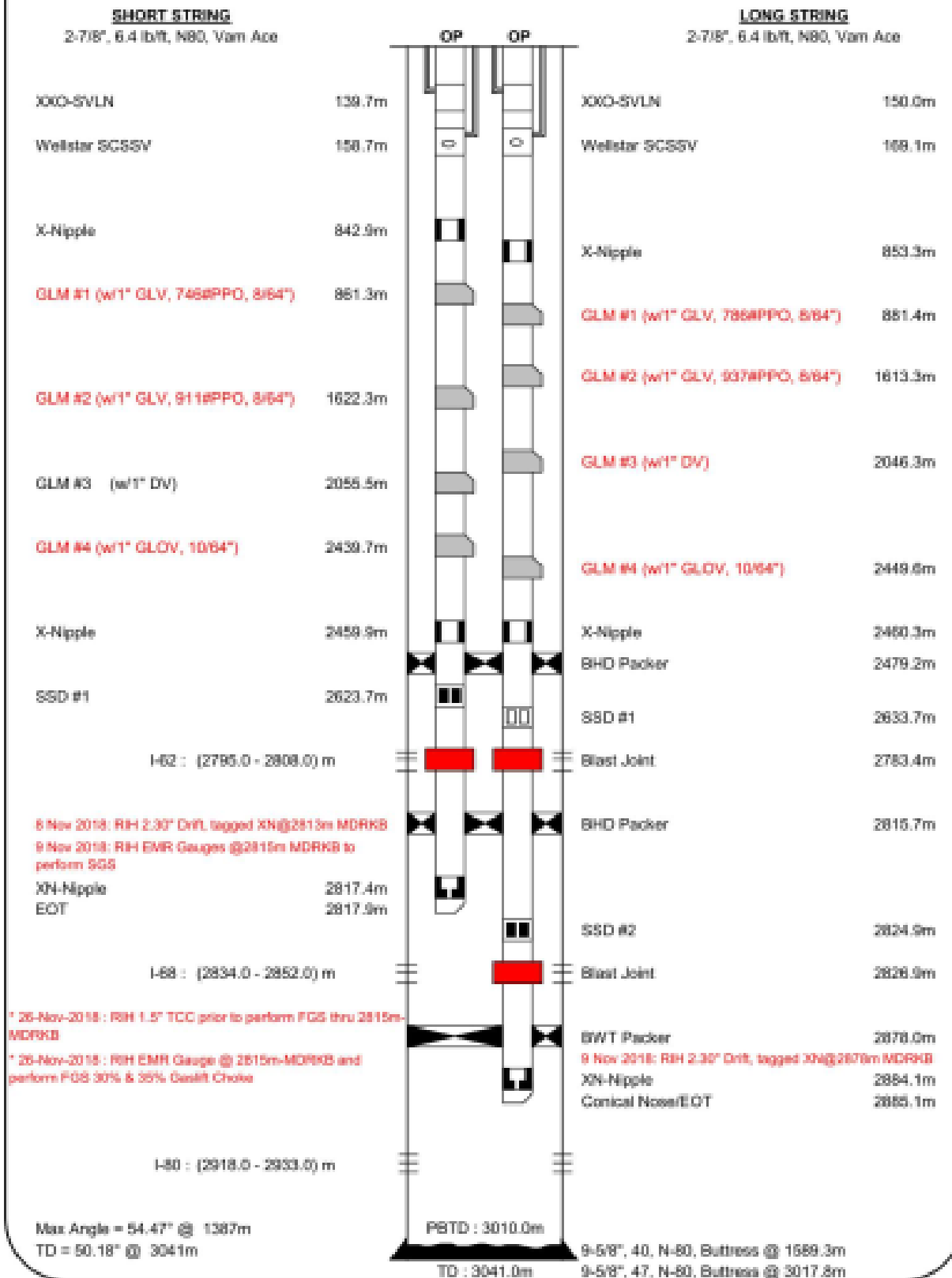
Date:



WELL SCHEMATIC

LAST UPDATE: 6-Apr-19

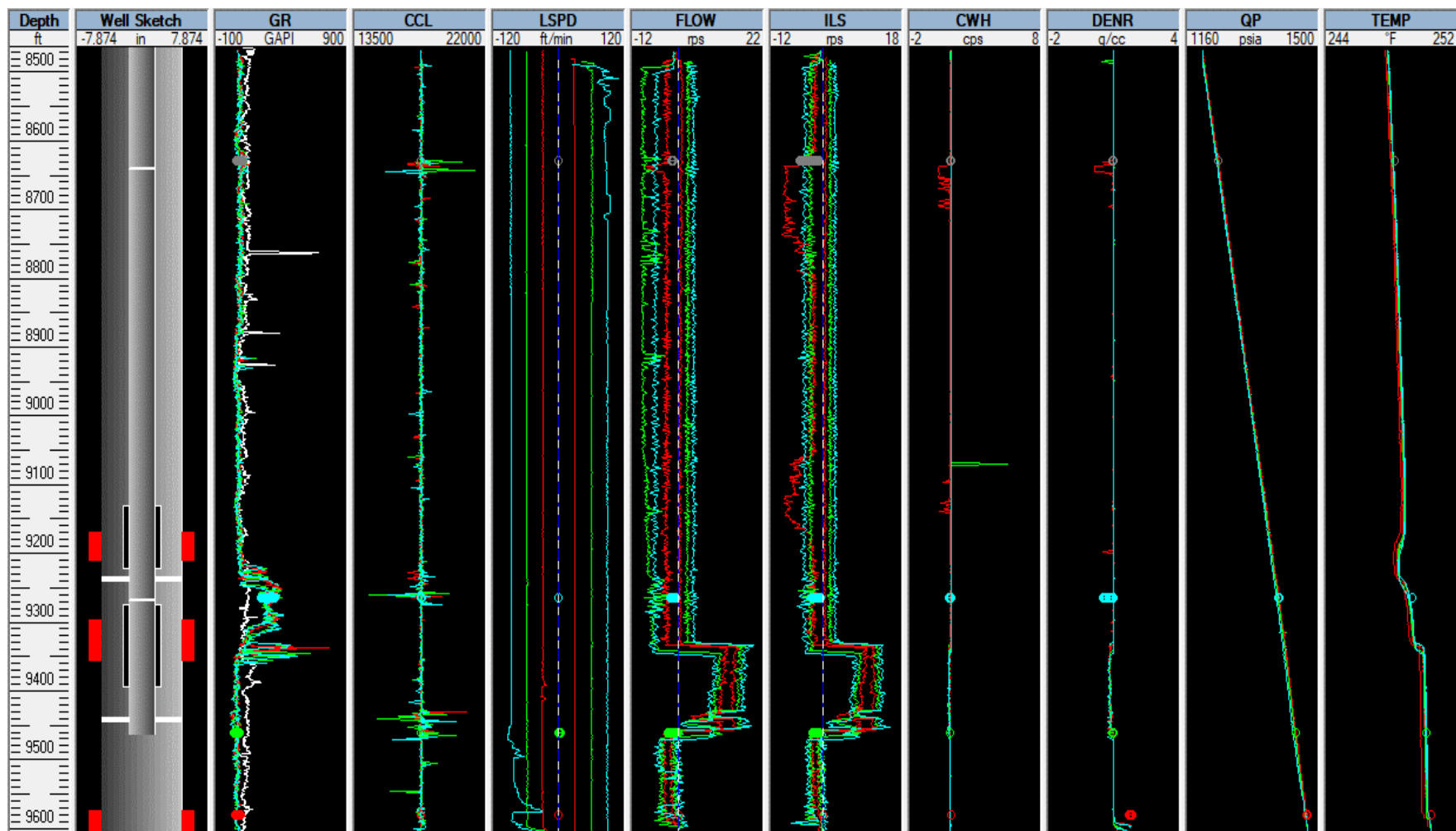
Larut A-7 COMPLETION SKETCH



FIELD QUICK LOOK

Logging Interval: 8464 - 9606 ftMDDF.

Flowing Passes (Up & Down PL Sensor Passes Screenshot load by Emeraude)





TOOLSTRING CONFIGURATIONS

Sensor	Offset (ft)	Schematic	Description	Length (ft)	O.D. (in)	Weight (lb)
			MBH-014 (000001) Memory Battery Housing (5C)	1.38	1.69	9.00
			UMT-007 (12016101) Ultrawire Memory Tool (1GB)	1.04	1.69	6.60
			QPS-019 (10021570) Quartz Pressure Sensor	1.58	1.69	9.00
QP	17.07					
QTMP	17.07					
TEMP	15.93		PRT-016 (217141) Platinum Resistance Thermometer	1.04	1.69	6.00
GR	14.35		PGR-020 (217116) Production Gamma Ray	1.92	1.69	9.50
CCL	12.85		CCL-015 (10012220) Casing Collar Locator	1.54	1.69	9.00
			PKJ-013 (000002) Production Knuckle Joint	0.57	1.69	3.50
			PKJ_013-PKJ	0.57	1.69	3.50
			PRC-001 (10012593) Production Roller Centraliser (3 Arm)	1.92	1.69	7.00
ILSDIR	8.16		ILS-022 (51428) Inline Spinner	1.44	1.69	6.00
ILSRATE	8.16					
CWH	6.35		CWH-013 (10010264) Capacitance Water Holdup	2.18	1.69	10.00
CWHC	6.35					
DENR	4.07		FDR-020 (10010243) Fluid Density Radioactive	1.92	1.69	10.00
FDRC	4.07					
			PRC-001 (10010844) Production Roller Centraliser (3 Arm)	1.92	1.69	7.00
			CFBE-05 (211582) Caged Fullbore Electronics	0.95	1.69	2.50
CFSDIR	0.13					
CFSRATE	0.13		CFSM-01 (10022712) Continuous Flowmeter Spinner Mechanicals 1 11/16"	0.84	1.69	1.00
		Dataset:	Sondex Ultrawire Memory Fullstring			
		Total length:	20.82 ft			
		Total weight:	99.60 lb			
		O.D.:	1.69 in			